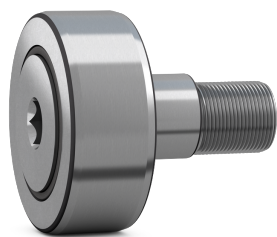


SKF NUKRE 80 A



Cam follower (stud-type track roller) with eccentric collar, integral sealing and ready-to-mount.

Cam followers (stud-type track rollers) are designed to run on all types of tracks and to be used in cam drives, conveyor systems, etc. They are based on a double row full complement cylindrical roller bearing with a threaded solid stud instead of an inner ring. The design includes an eccentric collar pressed onto the stud, and a thick-walled outer ring with a crowned running surface. The bearings are supplied sealed and ready-to-mount, and can be relubricated via the stud.

Technical specifications

Dimensions	
Outside diameter	80 mm
Attachment diameter	35 mm
Total length	100 mm
Width outer ring	35 mm
Length shank on stud	63 mm
Distance lubrication hole to flange ring	15 mm
Width locking collar	29 mm
Distance face outer ring to face side washer	1 mm
Outside diameter flange ring	47 mm
Thread stud	M 30x1.5
Length thread	32 mm
Seat diameter for lubrication accessories	8 mm
Diameter of lubrication hole (shank)	4 mm
Width across flats	14 mm
Eccentricity	1.5 mm
Chamfer dimension	1.1 mm
Functional outside diameter	80 mm
Stud diameter	35 mm
Length	100 mm
Width, outer ring	35 mm

Calculation data	
Basic dynamic load rating	69.3 kN
Basic static load rating	86.5 kN
Fatigue load limit	10.8 kN
Maximum dynamic radial loads	48 kN
Maximum static radial loads	69.5 kN
Limiting speed	1900 r/min

Mounting information	
Recommended tightening torque	450 N·m

Included products	
Grease fitting	NIP A3x9.5
Hexagonal nut	M 30x1.5

Associated products	
Lubrication adapter	AP 14

Performance	
Basic dynamic load rating	69.3 kN
Basic static load rating	86.5 kN
Limiting speed	1900 r/min

Properties	
Rolling elements	Cylindrical rollers
Number of rows	2

Outer ring profile	Crowned
Stud alignment	Centric stud with eccentric collar
Number of flanges, outer ring	2
Feature for tightening	Hexagonal recess
Cage	Without
Radial internal clearance	Between C2 and CN
Tolerance class	Other
Material, bearing	Bearing steel
Coating	Without
Sealing	Seal on both sides
Sealing type	Labyrinth
Lubricant	Grease
Relubrication feature	Centre of each stud end

Logistics	
Product net weight	1.92 kg
eClass code	23-05-09-03
UNSPSC code	31171512

SKF drawings

