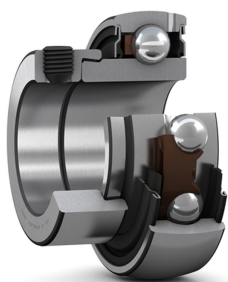


SKF YET 203/15

Insert bearing with an eccentric locking collar and narrow inner ring

Insert bearings are based on sealed deep groove ball bearings. This variant is intended for use in applications where the direction of rotation is constant. It has a narrow inner ring extended on one side, with an eccentric locking collar, enabling quick and easy mounting onto the shaft.



Technical specifications

Dimensions	
Bore diameter	15 mm
Outside diameter	40 mm
Overall bearing width	28.6 mm
Width of inner ring	19.1 mm
Width of outer ring	12 mm
Outside diameter of inner ring	24.2 mm
Outside diameter of locking collar	27.2 mm
Distance from side face to thread centre	4.75 mm
Chamfer dimension of inner ring	0.3 mm
Distance from locking device side face to raceway centre	22.1 mm
Shaft diameter	15 mm
Width, total	28.6 mm
Width, inner ring	19.1 mm
Width, outer ring	12 mm

Calculation data	
Basic dynamic load rating	9.56 kN
Basic static load rating	4.75 kN
Fatigue load limit	0.2 kN
Limiting speed	9500 r/min
	Limiting speed with shaft tolerance h6
Calculation factor	13

Mounting information	
Set screw	M6x0.75
Hexagonal key size for set screw	3 mm
Recommended tightening torque for set screw	4 N·m

Associated products	
Rubber seating ring	RIS 203

Performance	
Basic dynamic load rating	9.56 kN
Basic static load rating	4.75 kN
Limiting speed	9500 r/min
Note	Limiting speed with shaft tolerance h6

Properties	
Retaining feature, inner ring	Eccentric collar
Bore type	Cylindrical
Rolling elements	Balls
Outer ring type	Spherical
Inner ring extension	On one side
Cage	Non-metallic
Rubber seating ring	Without
Material, bearing	Bearing steel
Coating	Without

Sealing	Seal on both sides
Sealing type	Contact, standard
Lubricant	Grease
Relubrication feature	With

Logistics	
Product net weight	0.119 kg
eClass code	23-05-08-02
UNSPSC code	31171536

SKF drawings