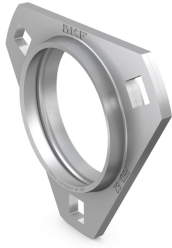


## SKF PFD 52



### Triangular flanged pressed steel housing for insert bearings

Triangular flanged pressed steel housings for insert bearings are lightweight and made from cold-rolled steel, and are zinc-coated for corrosion protection. The housings are cost-effective and designed for simple applications with light loads. The two-part housing, which has no provision for relubrication, can be ordered separately from the insert bearing, making a large number of combinations possible.

## Technical specifications

General	
Material	Pressed steel
Dimensions	
Diameter of spherical seat	52 mm
Width housing half	9 mm
Material thickness	2 mm
Overall length	95 mm
Distance from straight edge to bearing seat centre	34 mm
Abutment diameter	56 mm
Pitch diameter of bolt holes	76.2
Length of attachment bolt hole	8.7 mm
Spherical seating diameter	52 mm
Housing overall width	18 mm
Pitch diameter of bolt holes of round and triangle flange type housing	76.2 mm
Calculation data	
Permissible radial load	3.6 kN
Mounting information	
Recommended diameter for attachment bolts, mm	8 mm
Recommended diameter for attachment bolts, inch	0.3125 in
Properties	
Housing type	Flanged
Flanged housing type	Triangular
Number of bolt holes for fasteners	3
Fastening bolt hole type	Plain
Material, housing	Pressed steel
Coating	Zinc-coated
Relubrication hole	Without
Grease fitting	Without
Logistics	
Product net weight	0.12 kg
eClass code	23-05-08-02
UNSPSC code	31171536

**SKF drawings**