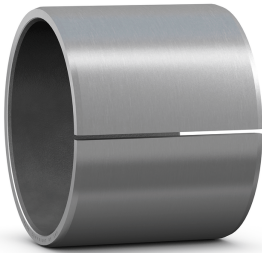


SKF PCM 303420 E

PTFE composite straight bushing

SKF PTFE composite straight (cylindrical) bushings are suitable for oscillating, rotating and linear movements, and can accommodate radial loads. Despite their thin-walled design, they can accommodate heavy loads. They also provide good heat dissipation, therefore enabling relatively high sliding velocities.



Technical specifications

General	
Material	PTFE composite
Operating temperature	-200 °C
Operating temperature	250 °C

Dimensions	
Bore diameter	30 mm
Outside diameter	34 mm
Width	20 mm
Length chamfer bore - axial direction	0.1 mm
Length chamfer bore - axial direction	0.7 mm
Length chamfer outside diameter - axial direction	0.6 mm
Length chamfer outside diameter - axial direction	1.4 mm

Recommended fits	
Tolerance shaft	f7
Tolerance housing	H7

Calculation data	
Basic dynamic load rating, radial direction	46.5 kN
Basic static load rating, radial direction	143 kN
Specific dynamic load factor	80 N/mm ²
Specific static load factor	250 N/mm ²
Factor depending on material and bearing type	480
Permissible sliding velocity	2 m/s
Coefficient of friction	0.03
Coefficient of friction	0.25

Performance	
Basic dynamic load rating	46.5 kN
Basic static load rating	143 kN

Properties	
Design	Straight
Material	PTFE composite
Relubrication feature	Without

Logistics	
Product net weight	0.0295 kg
eClass code	23-05-01-90
UNSPSC code	31171605

SKF drawings