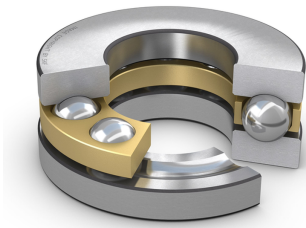


# SKF 51156 M

## Single direction thrust ball bearing

Single direction thrust ball bearings can accommodate axial loads in one direction. They must not be subjected to any radial load. Their separable components facilitate mounting/dismounting and maintenance inspections. Many of the components are interchangeable. The shaft washers have a ground bore that enables an interference fit.



### Technical specifications

Dimensions	
Bore diameter	280 mm
Outside diameter	350 mm
Height	53 mm
Outside diameter shaft washer	347 mm
Inner diameter housing washer	283 mm
Chamfer dimension washer	1.5 mm

Abutment dimensions	
Abutment diameter shaft	322 mm
Abutment diameter housing	308 mm
Fillet radius	1.5 mm

Calculation data	
Basic dynamic load rating	319 kN
Basic static load rating	1460 kN
Fatigue load limit	30.5 kN
Reference speed	950 r/min
Limiting speed	1300 r/min
Minimum load factor	11

Performance	
Basic dynamic load rating	319 kN
Basic static load rating	1460 kN
Reference speed	950 r/min
Limiting speed	1300 r/min

Properties	
Axial load capability	Single-direction
Number of rows	1
Cage	Machined brass
Housing washer type	Flat
Tolerance class	Normal
Material, bearing	Bearing steel
Coating	Without
Indicative carbon footprint for new product	43.2 kg CO <sub>2</sub> e

Logistics	
Product net weight	12 kg
eClass code	23-05-10-01
UNSPSC code	31171507

**SKF drawings**