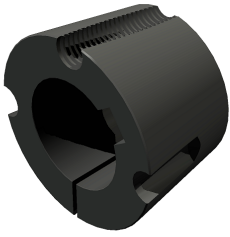


SKF PHF TB2012X25MM

Taper bushing



Bushings and hubs are available in many variants, offering specific benefits in power transmission applications ranging from automotive to papermaking. Taper bushings have a split, flangeless design with a tapered outside diameter that matches the tapered bore of a pulley, sprocket or coupling. The bushings are easy to install and, after being tightened, they provide a firm and secure grip on the shaft.

Technical specifications

| Dimensions | |
|------------------|---------|
| Bore diameter | 25 mm |
| Outside diameter | 69.9 mm |
| Width | 31.8 mm |

| Properties | |
|----------------|----------------|
| Bushing number | 2012 |
| Category | Taper bushings |
| Material | Cast iron |

| Logistics | |
|--------------------|-------------|
| Product net weight | 0.654 kg |
| eClass code | 23-05-19-01 |
| UNSPSC code | 31171605 |