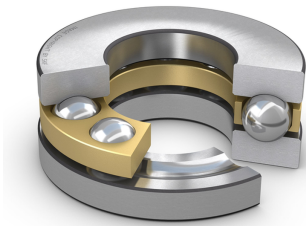


# SKF 51256 M

## Single direction thrust ball bearing

Single direction thrust ball bearings can accommodate axial loads in one direction. They must not be subjected to any radial load. Their separable components facilitate mounting/dismounting and maintenance inspections. Many of the components are interchangeable. The shaft washers have a ground bore that enables an interference fit.



### Technical specifications

Dimensions	
Bore diameter	280 mm
Outside diameter	380 mm
Height	80 mm
Outside diameter shaft washer	375 mm
Inner diameter housing washer	284 mm
Chamfer dimension washer	2.1 mm

Abutment dimensions	
Abutment diameter shaft	339 mm
Abutment diameter housing	321 mm
Fillet radius	2 mm

Calculation data	
Basic dynamic load rating	488 kN
Basic static load rating	2320 kN
Fatigue load limit	47.5 kN
Reference speed	750 r/min
Limiting speed	1000 r/min
Minimum load factor	28

Performance	
Basic dynamic load rating	488 kN
Basic static load rating	2320 kN
Reference speed	750 r/min
Limiting speed	1000 r/min

Properties	
Axial load capability	Single-direction
Number of rows	1
Cage	Machined brass
Housing washer type	Flat
Tolerance class	Normal
Material, bearing	Bearing steel
Coating	Without
Indicative carbon footprint for new product	99.4 kg CO <sub>2</sub> e

Logistics	
Product net weight	27.6 kg
eClass code	23-05-10-01
UNSPSC code	31171507

**SKF drawings**