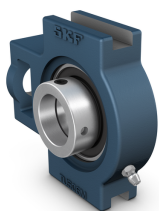


SKF TU 25 FM



Take-up cast iron unit with insert ball bearing, eccentric locking collar and narrow housing.

Take-up ball bearing units, consisting of an insert bearing based on a sealed deep groove ball bearing mounted in a grey cast iron housing. This variant is intended for use in applications where the direction of rotation is constant. It has an inner ring extended on one side, with an eccentric locking collar, enabling quick and easy mounting onto the shaft.

Technical specifications

General	
Compliance with standard	ISO
Purpose specific	For material handling applications
Material, housing	Cast iron
Sealing, bearing	Seal on both sides
Sealing type, bearing	Contact, standard
Sealing, unit	Optional end cover
Coating	Without

Dimensions	
Bore diameter	25 mm
Shoulder diameter of inner ring	33.74 mm
Outside diameter of locking ring	37.4 mm
Overall width	34 mm
Width of piloting groove	13.5 mm
Width of flange in which piloting grooves are provided	25 mm
Standout of end cover	19 mm
Overall bearing width	31 mm
Distance from locking device side face to thread centre	4.75 mm
Overall height	91 mm
Distance between bottoms of piloting grooves	76 mm
Height of attachment end	53 mm
Overall length	100 mm
Distance from attachment end face to centre line of spherical seat diameter	64 mm
Length attachment end	10 mm
Length of piloting groove	52 mm
Diameter of attachment bolt hole	19 mm
Length of attachment slot	16 mm
Height of attachment slot	33 mm
Distance from locking device side face to raceway centre	23.5 mm
Housing thread for the grease fitting	1/4-28 UNF
Axial position of the housing thread	2 mm
Angular position of the housing thread	30 °
Diameter of head sphere of grease fitting	6.5 mm
Hexagonal key size for the grease fitting	7 mm
Thread of grease fitting	1/4-28 SAE-LT
Shaft diameter	25 mm
Housing overall width	34 mm
Bearing width, total	31 mm

Calculation data	
Basic dynamic load rating	14 kN
Basic static load rating	7.8 kN
Fatigue load limit	0.335 kN
Limiting speed	7000 r/min
	Limiting speed with shaft tolerance h6

Mounting information	
Set screw	M6x0.75
Hexagonal key size for set screw	3 mm
Recommended tightening torque for set screw	4 N·m

Performance	
Basic dynamic load rating	14 kN
Basic static load rating	7.8 kN
Limiting speed	7000 r/min
Note	Limiting speed with shaft tolerance h6

Properties	
Housing type	Take-up
Retaining feature, inner ring	Eccentric collar
Bore type	Cylindrical
Rubber seating ring	Without
Material, housing	Cast iron
Material, bearing	Bearing steel
Coating	Without
Sealing, bearing	Seal on both sides
Sealing type	Contact, standard
Sealing, unit	Optional end cover
Lubricant	Grease
Relubrication hole	With
Grease fitting	With

Logistics	
Product net weight	0.853 kg
eClass code	23-05-08-02
UNSPSC code	31171536

SKF drawings

