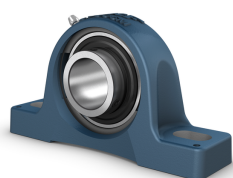


## SKF SY 20 TF



Pillow block ball bearing unit with extended inner ring and set screw locking, cast iron housing

Pillow (plummer) block ball bearing units consist of an insert bearing mounted in a cast iron housing that can be bolted to a support surface. This variant is suitable for applications with both constant and alternating directions of rotation. It has an inner ring extended on both sides and is locked onto the shaft by tightening a set screw on the inner ring, making it easy to mount.

### Technical specifications

General	
Compliance with standard	ISO
Purpose specific	For material handling applications
Material, housing	Cast iron
Sealing, bearing	Seal and flinger on both sides
Sealing type, bearing	Contact, standard
Sealing, unit	Optional end cover
Coating	Without

Dimensions	
Bore diameter	20 mm
Shoulder diameter of inner ring	28.2 mm
Base width	32 mm
Top width	21 mm
Standout of end cover	20.5 mm
Width of inner ring	31 mm
Distance from locking device side face to thread centre	4.5 mm
Height of spherical seat centre	33.3 mm
Foot height	14 mm
Overall height	64.5 mm
Distance between attachment bolts	97 mm
Maximum distance between attachment bolts	106 mm
Minimum distance between attachment bolts	88 mm
Overall length	127 mm
Diameter of attachment bolt hole	11.5 mm
Length of attachment bolt hole	20.5 mm
Distance from locking device side face to raceway centre	18.3 mm
Housing thread for the grease fitting	1/4-28 UNF
Axial position of the housing thread	2 mm
Angular position of the housing thread	45 °
Diameter of head sphere of grease fitting	6.5 mm
Hexagonal key size for the grease fitting	7 mm
Thread of grease fitting	1/4-28 SAE-LT
Distance of dowel pins	118 mm
Axial offset of dowel pins	11.5 mm
Recommended diameter for dowel pins	2 mm
Attachment bolt diameter	10 mm
Shaft diameter	20 mm
Centre height (pillow block)	33.3 mm
Housing overall width	32 mm
Centre distance between bolt holes	97 mm
Bearing width, total	31 mm

Calculation data	
Basic dynamic load rating	12.7 kN
Basic static load rating	6.55 kN
Fatigue load limit	0.28 kN
Limiting speed	8500 r/min

**Mounting information**

Set screw	M6x0.75
Hexagonal key size for set screw	3 mm
Recommended tightening torque for set screw	4 N·m
Recommended diameter for attachment bolts, mm	10 mm
Recommended diameter for attachment bolts, inch	0.375 in

**Performance**

Basic dynamic load rating	12.7 kN
Basic static load rating	6.55 kN
Limiting speed	8500 r/min
Note	Limiting speed with shaft tolerance h6

**Properties**

Housing type	Pillow block, normal base
Number of bolt holes for fasteners	2
Fastening bolt hole type	Plain
Retaining feature, inner ring	Set screws
Bore type	Cylindrical
Rubber seating ring	Without
Material, housing	Cast iron
Material, bearing	Bearing steel
Coating	Without
Sealing, bearing	Seal and flinger on both sides
Sealing type	Contact, standard
Sealing, unit	Optional end cover
Lubricant	Grease
Relubrication hole	With
Grease fitting	With

**Logistics**

Product net weight	0.588 kg
eClass code	23-05-08-02
UNSPSC code	31171536

**SKF drawings**

