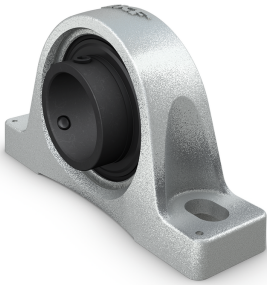


SKF SY 40 TF/VA228

Pillow block ball bearing unit with extended inner ring and set screw locking, high

Pillow (plummer) block ball bearing units consist of an insert bearing mounted in a cast iron housing that can be bolted to a support surface. This variant is suitable for high temperature applications, and for both constant and alternating directions of rotation. It has an inner ring extended on both sides and is locked onto the shaft by tightening a set screw on the inner ring, making it easy to mount.



Technical specifications

General	
Running in required	No
Dimensions	
Shaft diameter	40 mm
Shoulder diameter inner ring	51.8 mm
Base width	48 mm
Top width	30 mm
Width inner ring	49.2 mm
Distance from locking device side face to thread centre	8 mm
Spherical seat centre height	49.2 mm
Step height	19 mm
Overall height	99 mm
Distance between attachment bolts	135.5 mm
Minimum distance between attachment bolts	125 mm
Maximum distance between attachment bolts	146 mm
Overall width	175 mm
Width of attachment bolt hole	14 mm
Length of attachment bolt hole	24.5 mm
Distance from locking device side face to raceway centre	30.2 mm
Attachment bolt diameter	12 mm
Centre height (pillow block)	49.2 mm
Housing overall width	48 mm
Centre distance between bolt holes	135.5 mm
Bearing width, total	49.2 mm
Calculation data	
Basic dynamic load rating	30.7 kN
Basic static load rating	19 kN
Limiting speed	150 r/min
Operating temperature	350 °C
Mounting information	
Set screw	M8x1
Hexagonal key size for set screw	4 mm
Recommended tightening torque for set screw	6.5 N·m
Attachment bolts, recommended metric size	12 mm
Attachment bolts, recommended inch size	0.5 in
Performance	
Basic dynamic load rating	30.7 kN
Basic static load rating	19 kN
Limiting speed	150 r/min
Maximum operating temperature	350 °C
Properties	
Housing type	Pillow block, normal base
Number of bolt holes for fasteners	2

Fastening bolt hole type	Plain
Retaining feature, inner ring	Set screws
Bore type	Cylindrical
Rubber seating ring	Without
Material, housing	Cast iron
Material, bearing	High temperature steel
Coating	Zinc-coated housing and manganese phosphate coated bearing
Sealing, bearing	Shield and flinger on both sides
Sealing type	Non-contact
Sealing, unit	Without
Lubricant	Solid lubricant
Relubrication hole	Without
Grease fitting	Without

Logistics	
Product net weight	1.93 kg
eClass code	23-05-90-90
UNSPSC code	31171536

SKF drawings

