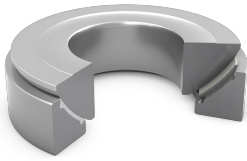


## SKF GX 50 F

Thrust spherical plain bearing, maintenance-free, metric sizes



Thrust spherical plain bearings are designed to accommodate axial and combined radial and axial loads. This specific design includes a steel/PTFE FRP sliding contact surface combination that is maintenance-free. However, relubrication, which can be applied from both sides, can extend bearing service life.

### Technical specifications

General	
Sliding contact surface combination	Steel/PTFE FRP
Material, shaft washer	Bearing steel
Material, housing washer	Bearing steel
Relubrication feature	Without
Sealing	Without

Dimensions	
Bore diameter	50 mm
Outside diameter	130 mm
Height	42.5 mm
Angle of tilt	5.3 °
Raceway diameter inner ring (sphere diameter shaft washer)	139 mm
Outside diameter inner ring (shaft washer)	120 mm
Bore diameter outer ring (housing washer)	70 mm
Height inner ring (shaft washer)	33 mm
Height outer ring (housing washer)	30.5 mm
Chamfer dimension	1 mm
Distance sphere diameter centre - shaft washer back face (large inner ring side face)	30 mm
Height, total	42.5 mm
Height, shaft washer	33 mm
Height, housing washer	30.5 mm

Abutment dimensions	
Abutment diameter shaft	98 mm
Abutment diameter housing	105 mm
Fillet radius	1 mm

Calculation data	
Basic dynamic load rating - axial direction	275 kN
Basic static load rating - axial direction	440 kN
Specific dynamic load factor	50 N/mm <sup>2</sup>
Specific static load factor	80 N/mm <sup>2</sup>
Material constant	670

Performance	
Basic dynamic load rating	275 kN
Basic static load rating	440 kN

Properties	
Sliding contact surface combination	Steel/PTFE FRP
Material, shaft washer	Bearing steel
Material, housing washer	Bearing steel
Maintenance	Maintenance-free
Sealing	Without
Relubrication feature	Without

<b>Logistics</b>	
Product net weight	3.2 kg
eClass code	23-05-01-06
UNSPSC code	31171515

**SKF drawings**

