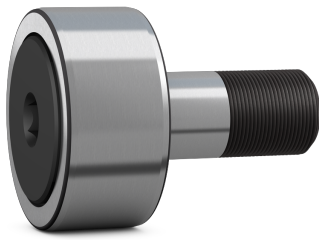


SKF KR 19

Cam follower (stud-type track roller) with relubrication feature



Cam followers (stud-type track rollers) are designed to run on all types of tracks and to be used in cam drives, conveyor systems, etc. They are based on a needle roller bearing with a threaded solid stud instead of an inner ring. They have a thick-walled outer ring with a crowned running surface and are supplied ready-to-mount. A narrow gap between the outer ring and the adjacent components forms a gap-type seal. The bearings can be relubricated via the stud.

Technical specifications

Dimensions	
Outside diameter	19 mm
Attachment diameter	8 mm
Total length	32.2 mm
Width outer ring	11 mm
Length shank on stud	20 mm
Distance face outer ring to face side washer	0.6 mm
Outside diameter flange ring	13.9 mm
Thread stud	M8x1.25
Length thread	10 mm
Seat diameter for lubrication accessories	3 mm
Width across flats	4 mm
Functional outside diameter	19 mm
Stud diameter	8 mm
Length	32.2 mm
Width, outer ring	11 mm

Calculation data	
Basic dynamic load rating	3.3 kN
Basic static load rating	3.8 kN
Fatigue load limit	0.415 kN
Maximum dynamic radial loads	3.75 kN
Maximum static radial loads	5.4 kN
Limiting speed	5600 r/min

Mounting information	
Recommended tightening torque	8 N·m

Included products	
Grease fitting	NIP C3.2x5.2
Hexagonal nut	M 8x1.25

Performance	
Basic dynamic load rating	3.3 kN
Basic static load rating	3.8 kN
Limiting speed	5600 r/min

Properties	
Rolling elements	Needle rollers
Number of rows	1
Outer ring profile	Crowned
Stud alignment	Centric
Number of flanges, outer ring	2
Feature for tightening	Hexagonal recess
Cage	With
Radial internal clearance	Between C2 and CN
Tolerance class	Other
Material, bearing	Bearing steel

Coating	Without
Sealing	Seal on both sides
Sealing type	Gap-type
Lubricant	Grease
Relubrication feature	Centre of stud head

Logistics	
Product net weight	0.0339 kg
eClass code	23-05-09-03
UNSPSC code	31171512

SKF drawings