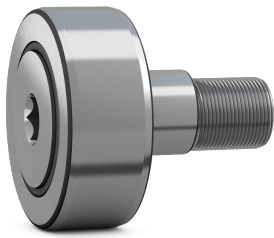


SKF NUKRE 52 A



Cam follower (stud-type track roller) with eccentric collar, integral sealing and ready-to-mount

Cam followers (stud-type track rollers) are designed to run on all types of tracks and to be used in cam drives, conveyor systems, etc. They are based on a double row full complement cylindrical roller bearing with a threaded solid stud instead of an inner ring. The design includes an eccentric collar pressed onto the stud, and a thick-walled outer ring with a crowned running surface. The bearings are supplied sealed and ready-to-mount, and can be relubricated via the stud.

Technical specifications

Dimensions	
Outside diameter	52 mm
Attachment diameter	24 mm
Total length	66 mm
Width outer ring	24 mm
Length shank on stud	40.5 mm
Distance lubrication hole to flange ring	9 mm
Width locking collar	18 mm
Distance face outer ring to face side washer	0.8 mm
Outside diameter flange ring	31 mm
Thread stud	M 20x1.5
Length thread	21 mm
Seat diameter for lubrication accessories	6 mm
Diameter of lubrication hole (shank)	4 mm
Width across flats	10 mm
Eccentricity	1 mm
Chamfer dimension	1 mm
Functional outside diameter	52 mm
Stud diameter	24 mm
Length	66 mm
Width, outer ring	24 mm

Calculation data	
Basic dynamic load rating	29.7 kN
Basic static load rating	36 kN
Fatigue load limit	4.25 kN
Maximum dynamic radial loads	18 kN
Maximum static radial loads	25.5 kN
Limiting speed	3200 r/min

Mounting information	
Recommended tightening torque	120 N·m

Included products	
Grease fitting	NIP A2x7.5
Hexagonal nut	M 20x1.5

Associated products	
Lubrication adapter	AP 10

Performance	
Basic dynamic load rating	29.7 kN
Basic static load rating	36 kN
Limiting speed	3200 r/min

Properties	
Rolling elements	Cylindrical rollers
Number of rows	2

Outer ring profile	Crowned
Stud alignment	Centric stud with eccentric collar
Number of flanges, outer ring	2
Feature for tightening	Hexagonal recess
Cage	Without
Radial internal clearance	Between C2 and CN
Tolerance class	Other
Material, bearing	Bearing steel
Coating	Without
Sealing	Seal on both sides
Sealing type	Labyrinth
Lubricant	Grease
Relubrication feature	Centre of each stud end

Logistics	
Product net weight	0.534 kg
eClass code	23-05-09-03
UNSPSC code	31171512

SKF drawings

