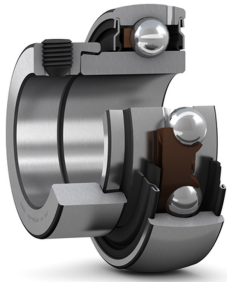


SKF YET 206-103



Insert bearing with an eccentric locking collar and narrow inner ring

Insert bearings are based on sealed deep groove ball bearings. This variant is intended for use in applications where the direction of rotation is constant. It has a narrow inner ring extended on one side, with an eccentric locking collar, enabling quick and easy mounting onto the shaft.

Technical specifications

Dimensions	
Bore diameter	30.163 mm
Outside diameter	62 mm
Overall bearing width	35.7 mm
Width of inner ring	23.8 mm
Width of outer ring	18 mm
Outside diameter of inner ring	39.7 mm
Outside diameter of locking collar	44.1 mm
Distance from side face to thread centre	5.95 mm
Chamfer dimension of inner ring	0.6 mm
Distance from locking device side face to raceway centre	26.7 mm
Shaft diameter	30.163 mm
Width, total	35.7 mm
Width, inner ring	23.8 mm
Width, outer ring	18 mm

Calculation data	
Basic dynamic load rating	19.5 kN
Basic static load rating	11.2 kN
Fatigue load limit	0.475 kN
Limiting speed	6300 r/min
Calculation factor	Limiting speed with shaft tolerance h6 14

Mounting information	
Set screw	5/16-24 UNF
Hexagonal key size for set screw	3.969 mm
Recommended tightening torque for set screw	6.5 N·m

Associated products	
Rubber seating ring	RIS 206 A

Performance	
Basic dynamic load rating	19.5 kN
Basic static load rating	11.2 kN
Limiting speed	6300 r/min
Note	Limiting speed with shaft tolerance h6

Properties	
Retaining feature, inner ring	Eccentric collar
Bore type	Cylindrical
Rolling elements	Balls
Outer ring type	Spherical
Inner ring extension	On one side
Cage	Non-metallic
Rubber seating ring	Without
Material, bearing	Bearing steel
Coating	Without

Sealing	Seal on both sides
Sealing type	Contact, standard
Lubricant	Grease
Relubrication feature	With

Logistics	
Product net weight	0.316 kg
eClass code	23-05-08-02
UNSPSC code	31171536

SKF drawings