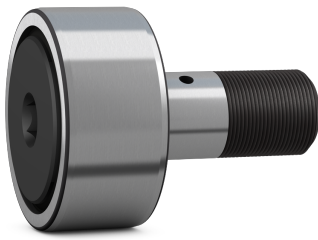


SKF KR 35 PP



Cam follower (stud-type track roller) with integral sealing and relubrication feature

Cam followers (stud-type track rollers) are designed to run on all types of tracks and to be used in cam drives, conveyor systems, etc. They are based on a needle roller bearing with a threaded solid stud instead of an inner ring. They have a thick-walled outer ring with a crowned running surface and are supplied sealed and ready-to-mount. The bearings can be relubricated via the stud.

Technical specifications

Dimensions	
Outside diameter	35 mm
Attachment diameter	16 mm
Total length	52.1 mm
Width outer ring	18 mm
Length shank on stud	32.5 mm
Distance lubrication hole to flange ring	8 mm
Distance face outer ring to face side washer	0.8 mm
Outside diameter flange ring	27.34 mm
Thread stud	M16x1.5
Length thread	17 mm
Seat diameter for lubrication accessories	4 mm
Diameter of lubrication hole (shank)	3 mm
Width across flats	8 mm
Functional outside diameter	35 mm
Stud diameter	16 mm
Length	52.1 mm
Width, outer ring	18 mm

Calculation data	
Basic dynamic load rating	8.58 kN
Basic static load rating	12.9 kN
Fatigue load limit	1.5 kN
Maximum dynamic radial loads	11 kN
Maximum static radial loads	15.6 kN
Limiting speed	3800 r/min

Mounting information	
Recommended tightening torque	58 N·m

Included products	
Grease fitting	NIP B1.5x5
Hexagonal nut	M 16x1.5

Performance	
Basic dynamic load rating	8.58 kN
Basic static load rating	12.9 kN
Limiting speed	3800 r/min

Properties	
Rolling elements	Needle rollers
Number of rows	1
Outer ring profile	Crowned
Stud alignment	Centric
Number of flanges, outer ring	2
Feature for tightening	Hexagonal recess
Cage	With
Radial internal clearance	Between C2 and CN

Tolerance class	Other
Material, bearing	Bearing steel
Coating	Without
Sealing	Seal on both sides
Sealing type	Contact
Lubricant	Grease
Relubrication feature	Centre of each stud end and radial hole in stud shank

Logistics	
Product net weight	0.198 kg
eClass code	23-05-09-03
UNSPSC code	31171512

SKF drawings