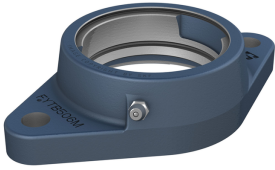


SKF FYTB 504 M

Oval flanged housing for insert bearings, cast iron

These oval flanged housings for insert bearings are made of grey cast iron and can be bolted with two bolts to a machine wall or frame. They have been developed for bearing arrangements that must operate reliably in difficult environments.



Technical specifications

General	
Material	Cast iron
Dimensions	
Diameter of spherical seat	47 mm
Top external diameter	58 mm
Base external diameter	60.5 mm
Centering diameter	50.8 mm
Overall width	29.5 mm
Flange width	11 mm
Axial position of spherical seat (from support surface)	19 mm
Depth of centring recess	3.2 mm
Standout of end cover	20.5 mm
Overall height	112 mm
Centre distance between bolt holes	90 mm
Overall length	60.5 mm
Diameter of attachment bolt hole	11.5 mm
Housing thread for grease fitting	1/4-28 UNF
Axial position of the housing thread	20 mm
Angular position of the housing thread	45 °
Diameter of head sphere of grease fitting	6.5 mm
Hexagonal key size for the grease fitting	7 mm
Thread of the grease fitting	1/4-28 SAE-LT
Distance of dowel pins	74 mm
Axial offset of dowel pins	11.5 mm
Recommended diameter for dowel pins	2 mm
Spherical seating diameter	47 mm
Housing overall width	29.5 mm
Mounting information	
Recommended diameter for attachment bolts, mm	10 mm
Recommended diameter for attachment bolts, inch	0.375 in
Associated products	
End cover	ECY 204
Properties	
Housing type	Flanged
Flanged housing type	Oval
Number of bolt holes for fasteners	2
Fastening bolt hole type	Plain
Material, housing	Cast iron
Coating	Without
Relubrication hole	With
Grease fitting	With
Logistics	
Product net weight	0.272 kg

eClass code	23-05-08-02
UNSPSC code	31171536

SKF drawings

