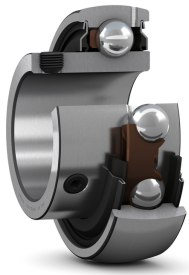


## SKF YAT 205-100

Insert bearing with set screws locking and narrow inner ring

Insert bearings are based on sealed deep groove ball bearings. This variant of insert bearing is suitable for applications with both constant and alternating directions of rotation. It has an inner ring extended on one side, and is locked onto the shaft by tightening two (set) screws on the inner ring.



### Technical specifications

Dimensions	
Bore diameter	25.4 mm
Outside diameter	52 mm
Width of inner ring	27.2 mm
Width of outer ring	15 mm
Outside diameter of inner ring	33.74 mm
Distance face to thread centre	5 mm
Chamfer dimension of inner ring	0.6 mm
Distance from locking device side face to raceway centre	19.5 mm
Shaft diameter	25.4 mm
Width, total	27.2 mm
Width, inner ring	27.2 mm
Width, outer ring	15 mm

Calculation data	
Basic dynamic load rating	14 kN
Basic static load rating	7.8 kN
Fatigue load limit	0.335 kN
Limiting speed	7000 r/min
	Limiting speed with shaft tolerance h6
Calculation factor	14

Mounting information	
Set screw	1/4-28 UNF
Hexagonal key size for set screw	3.175 mm
Recommended tightening torque for set screw	4 N·m

Associated products	
Rubber seating ring	RIS 205

Performance	
Basic dynamic load rating	14 kN
Basic static load rating	7.8 kN
Limiting speed	7000 r/min
Note	Limiting speed with shaft tolerance h6

Properties	
Retaining feature, inner ring	Set screws
Bore type	Cylindrical
Rolling elements	Balls
Outer ring type	Spherical
Inner ring extension	On one side
Cage	Non-metallic
Rubber seating ring	Without
Material, bearing	Bearing steel
Coating	Without
Sealing	Seal on both sides
Sealing type	Contact, standard

Lubricant	Grease
Relubrication feature	With

<b>Logistics</b>	
Product net weight	0.156 kg
eClass code	23-05-08-02
UNSPSC code	31171536

**SKF drawings**