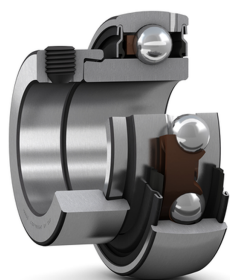


## SKF YET 208



Insert bearing with an eccentric locking collar and narrow inner ring

Insert bearings are based on sealed deep groove ball bearings. This variant is intended for use in applications where the direction of rotation is constant. It has a narrow inner ring extended on one side, with an eccentric locking collar, enabling quick and easy mounting onto the shaft.

### Technical specifications

| Dimensions   |         |
|--|---------|
| Bore diameter  | 40 mm   |
| Outside diameter   | 80 mm   |
| Overall bearing width                                    | 43.2 mm |
| Width of inner ring                                      | 29.7 mm |
| Width of outer ring                                      | 21 mm   |
| Outside diameter of inner ring                           | 51.8 mm |
| Outside diameter of locking collar                       | 56.5 mm |
| Distance from side face to thread centre                 | 6.75 mm |
| Chamfer dimension of inner ring                          | 1 mm    |
| Distance from locking device side face to raceway centre | 32.7 mm |
| Shaft diameter   | 40 mm   |
| Width, total   | 43.2 mm |
| Width, inner ring  | 29.7 mm |
| Width, outer ring  | 21 mm   |

| Calculation data          |  |
|---------------------------|--|
| Basic dynamic load rating | 30.7 kN                                      |
| Basic static load rating  | 19 kN  |
| Fatigue load limit        | 0.8 kN                                       |
| Limiting speed            | 4800 r/min                                   |
| Calculation factor        | Limiting speed with shaft tolerance h6<br>14 |

| Mounting information                        |          |
|---|----------|
| Set screw                                   | M10x1    |
| Hexagonal key size for set screw            | 5 mm     |
| Recommended tightening torque for set screw | 16.5 N·m |

| Associated products |           |
|---------------------|-----------|
| Rubber seating ring | RIS 208 A |

| Performance               |  |
|---------------------------|--|
| Basic dynamic load rating | 30.7 kN                                |
| Basic static load rating  | 19 kN                                  |
| Limiting speed            | 4800 r/min                             |
| Note                      | Limiting speed with shaft tolerance h6 |

| Properties                    |                  |
|-------------------------------|------------------|
| Retaining feature, inner ring | Eccentric collar |
| Bore type                     | Cylindrical      |
| Rolling elements              | Balls            |
| Outer ring type               | Spherical        |
| Inner ring extension          | On one side      |
| Cage                          | Non-metallic     |
| Rubber seating ring           | Without          |
| Material, bearing             | Bearing steel    |
| Coating                       | Without          |

|                       |                    |
|-----------------------|--------------------|
| Sealing               | Seal on both sides |
| Sealing type          | Contact, standard  |
| Lubricant             | Grease             |
| Relubrication feature | With               |

| <b>Logistics</b>   |             |
|--------------------|-------------|
| Product net weight | 0.577 kg    |
| eClass code        | 23-05-08-02 |
| UNSPSC code        | 31171536    |

**SKF drawings**