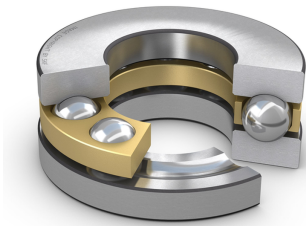


SKF 51234 M

Single direction thrust ball bearing

Single direction thrust ball bearings can accommodate axial loads in one direction. They must not be subjected to any radial load. Their separable components facilitate mounting/dismounting and maintenance inspections. Many of the components are interchangeable. The shaft washers have a ground bore that enables an interference fit.



Technical specifications

Dimensions	
Bore diameter	170 mm
Outside diameter	240 mm
Height	55 mm
Outside diameter shaft washer	237 mm
Inner diameter housing washer	173 mm
Chamfer dimension washer	1.5 mm

Abutment dimensions	
Abutment diameter shaft	212 mm
Abutment diameter housing	198 mm
Fillet radius	1.5 mm

Calculation data	
Basic dynamic load rating	281 kN
Basic static load rating	980 kN
Fatigue load limit	25 kN
Reference speed	1100 r/min
Limiting speed	1600 r/min
Minimum load factor	5.4

Performance	
Basic dynamic load rating	281 kN
Basic static load rating	980 kN
Reference speed	1100 r/min
Limiting speed	1600 r/min

Properties	
Axial load capability	Single-direction
Number of rows	1
Cage	Machined brass
Housing washer type	Flat
Tolerance class	Normal
Material, bearing	Bearing steel
Coating	Without
Indicative carbon footprint for new product	28.3 kg CO ₂ e

Logistics	
Product net weight	7.85 kg
eClass code	23-05-10-01
UNSPSC code	31171507

SKF drawings

