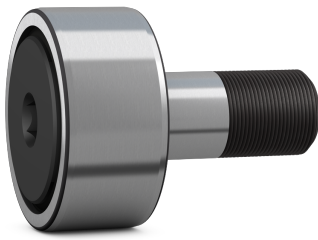


SKF KR 22 PP



Cam follower (stud-type track roller) with integral sealing and relubrication feature

Cam followers (stud-type track rollers) are designed to run on all types of tracks and to be used in cam drives, conveyor systems, etc. They are based on a needle roller bearing with a threaded solid stud instead of an inner ring. They have a thick-walled outer ring with a crowned running surface and are supplied sealed and ready-to-mount. The bearings can be relubricated via the stud.

Technical specifications

Dimensions	
Outside diameter	22 mm
Attachment diameter	10 mm
Total length	36.2 mm
Width outer ring	12 mm
Length shank on stud	23 mm
Distance face outer ring to face side washer	0.6 mm
Outside diameter flange ring	17.1 mm
Thread stud	M10x1
Length thread	12 mm
Seat diameter for lubrication accessories	3 mm
Width across flats	5 mm
Functional outside diameter	22 mm
Stud diameter	10 mm
Length	36.2 mm
Width, outer ring	12 mm

Calculation data	
Basic dynamic load rating	3.96 kN
Basic static load rating	5 kN
Fatigue load limit	0.56 kN
Maximum dynamic radial loads	4.15 kN
Maximum static radial loads	6 kN
Limiting speed	5000 r/min

Mounting information	
Recommended tightening torque	15 N·m

Included products	
Grease fitting	NIP B1.3x4.5
Hexagonal nut	M 10x1

Performance	
Basic dynamic load rating	3.96 kN
Basic static load rating	5 kN
Limiting speed	5000 r/min

Properties	
Rolling elements	Needle rollers
Number of rows	1
Outer ring profile	Crowned
Stud alignment	Centric
Number of flanges, outer ring	2
Feature for tightening	Hexagonal recess
Cage	With
Radial internal clearance	Between C2 and CN
Tolerance class	Other
Material, bearing	Bearing steel

Coating	Without
Sealing	Seal on both sides
Sealing type	Contact
Lubricant	Grease
Relubrication feature	Centre of each stud end

Logistics	
Product net weight	0.0544 kg
eClass code	23-05-09-03
UNSPSC code	31171512

SKF drawings