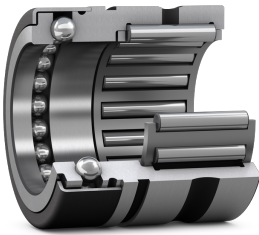


SKF NX 20 Z

Combined needle roller / thrust ball bearing (full complement thrust part) with a

These bearings consist of a radial needle roller bearing combined with a full complement thrust ball bearing. Together they can accommodate both moderate radial loads and lighter axial loads in one direction. Their low cross-sectional height makes the bearings particularly suitable for applications where other types of locating bearing arrangements occupy too much space. The thrust part is capped with a cover that forms a gap-type seal to retain the grease in the bearings.



Technical specifications

Dimensions	
Diameter under rollers	20 mm
Outside diameter	30 mm
Width	28 mm
Distance side face to lubrication hole	8 mm
Bore diameter of thrust part	20 mm
Chamfer dimension	0.3 mm
Bore diameter	20 mm

Abutment dimensions	
Diameter of shaft abutment	25 mm
Diameter of housing abutment	28 mm
Distance side face to back face of snap ring	12.2 mm
Radius of fillet	0.3 mm
Bore diameter of associated inner ring	17 mm
Diameter of inner ring raceway	20 mm
Width of associated inner ring	16 mm

Calculation data	
Basic dynamic load rating, radial	13.2 kN
Basic static load rating, radial	19.3 kN
Basic dynamic load rating, axial	7.8 kN
Basic static load rating, axial	17.3 kN
Fatigue load limit, radial	2.28 kN
Fatigue load limit, axial	0.64 kN
Minimum axial load factor	0.002
Reference speed	6300 r/min
Limiting speed	4500 r/min

Associated products	
Inner ring	IR 17x20x16
Snap ring	SW 30

Performance	
Reference speed	6300 r/min
Limiting speed	4500 r/min

Properties	
Rolling bearing type	Needle roller / full complement thrust ball bearing
Bearing part	Radial part without inner ring
Thrust part	Without cage
Radial part	With cage
Rolling element (thrust part)	Balls
Axial load capability	Single-direction
Tolerance class	Other
Material, bearing	Bearing steel
Coating	Without

Special feature	Thrust part with stamped steel cover without lubrication holes
Lubricant (thrust part)	Grease
Indicative carbon footprint for new product	0.25 kg CO ₂ e

Logistics	
Product net weight	0.068 kg
eClass code	23-05-09-03
UNSPSC code	31171512

SKF drawings