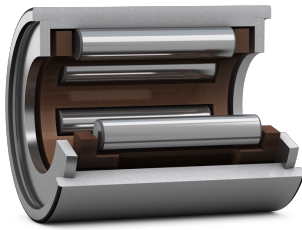


SKF NK 8/12 TN



Single row needle roller bearing with machined rings, with flanges, without inner

Single row needle roller bearings without an inner ring consist of an outer ring with a needle roller and cage assembly. They are an excellent choice for compact bearing arrangements in applications where hardened and ground raceways can be provided on the shaft. The outer ring includes two non-separable closure rings that act as flanges to guide the bearing axially.

Technical specifications

Dimensions	
Diameter under rollers	8 mm
Outside diameter	15 mm
Width	12 mm
Chamfer dimension outer ring	0.3 mm
Bore diameter of needle roller complement	8 mm

Abutment dimensions	
Diameter of housing abutment	13 mm
Fillet radius	0.3 mm

Calculation data	
Basic dynamic load rating	3.8 kN
Basic static load rating	4.25 kN
Fatigue load limit	0.465 kN
Reference speed	32000 r/min
Limiting speed	36000 r/min

Associated seals	
Radial shaft seal with a low cross-sectional height, single lip	G 8x15x3
Radial shaft seal with a low cross-sectional height, double lip	SD 8x15x3

Performance	
Basic dynamic load rating	3.8 kN
Basic static load rating	4.25 kN
Reference speed	32000 r/min
Limiting speed	36000 r/min

Properties	
Bearing part	Bearing without inner ring
Number of rows	1
Outer ring type	Machined (solid)
Aligning feature	Without
Cage	Non-metallic
Number of flanges, outer ring	2
Tolerance class	Normal
Material, bearing	Bearing steel
Coating	Without
Sealing	Without
Lubricant	None
Relubrication feature	Without
Indicative carbon footprint for new product	0.03 kg CO ₂ e

Logistics	
Product net weight	0.009 kg
eClass code	23-05-09-03
UNSPSC code	31171512

SKF drawings

