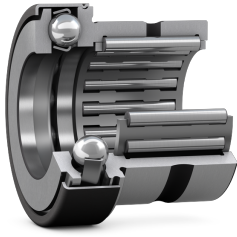


SKF NKX 35 Z

Combined needle roller / thrust ball bearing with a cover



These bearings consist of a radial needle roller bearing combined with a thrust ball bearing. Together they can accommodate both radial loads and axial loads in one direction. In addition, they can operate at relatively high speeds. Their low cross-sectional height makes the bearings particularly suitable for applications where other types of locating bearing arrangements occupy too much space. The thrust part is capped with a cover that forms a gap-type seal to retain the grease in the bearings.

Technical specifications

Dimensions	
Diameter under rollers	35 mm
Outside diameter	47 mm
Width	30 mm
Width of thrust part	12 mm
Distance side face to lubrication hole	9 mm
Bore diameter of thrust part	35 mm
Diameter of stamped steel cover	53.2 mm
Chamfer dimension	0.6 mm
Bore diameter	35 mm

Abutment dimensions	
Diameter of shaft abutment	47.7 mm
Radius of fillet	0.6 mm
Radius of fillet	0.3 mm
Bore diameter of associated inner ring	30 mm
Diameter of inner ring raceway	35 mm
Width of associated inner ring	20 mm

Calculation data	
Basic dynamic load rating, radial	24.6 kN
Basic static load rating, radial	45 kN
Basic dynamic load rating, axial	21.2 kN
Basic static load rating, axial	51 kN
Fatigue load limit, radial	5.6 kN
Fatigue load limit, axial	1.9 kN
Minimum axial load factor	0.01
Reference speed	5600 r/min
Limiting speed	4500 r/min

Associated products	
Inner ring	IR 30x35x20

Performance	
Reference speed	5600 r/min
Limiting speed	4500 r/min

Properties	
Rolling bearing type	Needle roller / thrust ball bearing
Bearing part	Radial part without inner ring
Thrust part	With cage
Radial part	With cage
Rolling element (thrust part)	Balls
Axial load capability	Single-direction
Tolerance class	Other
Material, bearing	Bearing steel
Coating	Without
Special feature	Thrust part with stamped steel cover without

	lubrication holes
Lubricant (thrust part)	Grease
Indicative carbon footprint for new product	0.61 kg CO ₂ e

Logistics	
Product net weight	0.168 kg
eClass code	23-05-09-03
UNSPSC code	31171512

SKF drawings