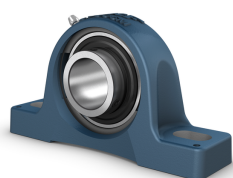


SKF SY 25 TF



Pillow block ball bearing unit with extended inner ring and set screw locking, cast iron housing

Pillow (plummer) block ball bearing units consist of an insert bearing mounted in a cast iron housing that can be bolted to a support surface. This variant is suitable for applications with both constant and alternating directions of rotation. It has an inner ring extended on both sides and is locked onto the shaft by tightening a set screw on the inner ring, making it easy to mount.

Technical specifications

General	
Compliance with standard	ISO
Purpose specific	For material handling applications
Material, housing	Cast iron
Sealing, bearing	Seal and flinger on both sides
Sealing type, bearing	Contact, standard
Sealing, unit	Optional end cover
Coating	Without

Dimensions	
Bore diameter	25 mm
Shoulder diameter of inner ring	33.74 mm
Base width	36 mm
Top width	22 mm
Standout of end cover	20.5 mm
Width of inner ring	34.1 mm
Distance from locking device side face to thread centre	5 mm
Height of spherical seat centre	36.5 mm
Foot height	16 mm
Overall height	70 mm
Distance between attachment bolts	102 mm
Maximum distance between attachment bolts	110 mm
Minimum distance between attachment bolts	94 mm
Overall length	130 mm
Diameter of attachment bolt hole	11.5 mm
Length of attachment bolt hole	19.5 mm
Distance from locking device side face to raceway centre	19.8 mm
Housing thread for the grease fitting	1/4-28 UNF
Axial position of the housing thread	2 mm
Angular position of the housing thread	45 °
Diameter of head sphere of grease fitting	6.5 mm
Hexagonal key size for the grease fitting	7 mm
Thread of grease fitting	1/4-28 SAE-LT
Distance of dowel pins	120 mm
Axial offset of dowel pins	13 mm
Recommended diameter for dowel pins	4 mm
Attachment bolt diameter	10 mm
Shaft diameter	25 mm
Centre height (pillow block)	36.5 mm
Housing overall width	36 mm
Centre distance between bolt holes	102 mm
Bearing width, total	34.1 mm

Calculation data	
Basic dynamic load rating	14 kN
Basic static load rating	7.8 kN
Fatigue load limit	0.335 kN
Limiting speed	7000 r/min

Mounting information

Set screw	M6x0.75
Hexagonal key size for set screw	3 mm
Recommended tightening torque for set screw	4 N·m
Recommended diameter for attachment bolts, mm	10 mm
Recommended diameter for attachment bolts, inch	0.375 in

Performance

Basic dynamic load rating	14 kN
Basic static load rating	7.8 kN
Limiting speed	7000 r/min
Note	Limiting speed with shaft tolerance h6

Properties

Housing type	Pillow block, normal base
Number of bolt holes for fasteners	2
Fastening bolt hole type	Plain
Retaining feature, inner ring	Set screws
Bore type	Cylindrical
Rubber seating ring	Without
Material, housing	Cast iron
Material, bearing	Bearing steel
Coating	Without
Sealing, bearing	Seal and flinger on both sides
Sealing type	Contact, standard
Sealing, unit	Optional end cover
Lubricant	Grease
Relubrication hole	With
Grease fitting	With

Logistics

Product net weight	0.732 kg
eClass code	23-05-08-02
UNSPSC code	31171536

SKF drawings

