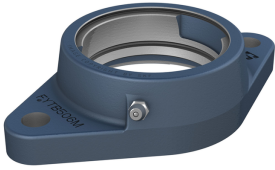


## SKF FYTB 510 M

Oval flanged housing for insert bearings, cast iron

These oval flanged housings for insert bearings are made of grey cast iron and can be bolted with two bolts to a machine wall or frame. They have been developed for bearing arrangements that must operate reliably in difficult environments.



### Technical specifications

General	
Material	Cast iron
Dimensions	
Diameter of spherical seat	90 mm
Top external diameter	107 mm
Base external diameter	116 mm
Centering diameter	101.6 mm
Overall width	43 mm
Flange width	15 mm
Axial position of spherical seat (from support surface)	28 mm
Depth of centring recess	3.2 mm
Standout of end cover	33 mm
Overall height	189 mm
Centre distance between bolt holes	157 mm
Overall length	116 mm
Diameter of attachment bolt hole	18 mm
Housing thread for grease fitting	1/4-28 UNF
Axial position of the housing thread	28.5 mm
Angular position of the housing thread	45 °
Diameter of head sphere of grease fitting	6.5 mm
Hexagonal key size for the grease fitting	7 mm
Thread of the grease fitting	1/4-28 SAE-LT
Distance of dowel pins	127 mm
Axial offset of dowel pins	20 mm
Recommended diameter for dowel pins	2 mm
Spherical seating diameter	90 mm
Housing overall width	43 mm
Mounting information	
Recommended diameter for attachment bolts, mm	16 mm
Recommended diameter for attachment bolts, inch	0.625 in
Associated products	
End cover	ECY 210
Properties	
Housing type	Flanged
Flanged housing type	Oval
Number of bolt holes for fasteners	2
Fastening bolt hole type	Plain
Material, housing	Cast iron
Coating	Without
Relubrication hole	With
Grease fitting	With
Logistics	
Product net weight	1.33 kg

eClass code	23-05-08-02
UNSPSC code	31171536

**SKF drawings**

