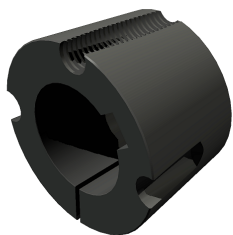


# SKF PHF TB2012X28MM

## Taper bushing



Bushings and hubs are available in many variants, offering specific benefits in power transmission applications ranging from automotive to papermaking. Taper bushings have a split, flangeless design with a tapered outside diameter that matches the tapered bore of a pulley, sprocket or coupling. The bushings are easy to install and, after being tightened, they provide a firm and secure grip on the shaft.

## Technical specifications

Dimensions	
Bore diameter	28 mm
Outside diameter	69.9 mm
Width	31.8 mm

Properties	
Bushing number	2012
Category	Taper bushings
Material	Cast iron

Logistics	
Product net weight	0.654 kg
eClass code	23-05-19-01
UNSPSC code	31171605