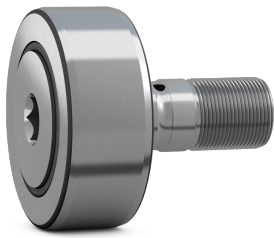


SKF NUKR 35 A



Cam follower (stud-type track roller) with integral sealing and relubrication feature

Cam followers (stud-type track rollers) are designed to run on all types of tracks and to be used in cam drives, conveyor systems, etc. They are based on a double row full complement cylindrical roller bearing with a threaded solid stud instead of an inner ring. They have a thick-walled outer ring with a crowned running surface and are supplied sealed and ready-to-mount. The bearings can be relubricated via the stud.

Technical specifications

Dimensions	
Outside diameter	35 mm
Attachment diameter	16 mm
Total length	52 mm
Width outer ring	18 mm
Length shank on stud	32.5 mm
Distance lubrication hole to flange ring	7.8 mm
Distance face outer ring to face side washer	0.8 mm
Outside diameter flange ring	20 mm
Thread stud	M 16x1.5
Length thread	17 mm
Seat diameter for lubrication accessories	6 mm
Diameter of lubrication hole (shank)	3 mm
Width across flats	8 mm
Chamfer dimension	0.6 mm
Functional outside diameter	35 mm
Stud diameter	16 mm
Length	52 mm
Width, outer ring	18 mm

Calculation data	
Basic dynamic load rating	16.8 kN
Basic static load rating	17.6 kN
Fatigue load limit	2 kN
Maximum dynamic radial loads	8.65 kN
Maximum static radial loads	12.2 kN
Limiting speed	5000 r/min

Mounting information	
Recommended tightening torque	58 N·m

Included products	
Grease fitting	NIP A2x7.5
Hexagonal nut	M 16x1.5

Associated products	
Lubrication adapter	AP 8

Performance	
Basic dynamic load rating	16.8 kN
Basic static load rating	17.6 kN
Limiting speed	5000 r/min

Properties	
Rolling elements	Cylindrical rollers
Number of rows	2
Outer ring profile	Crowned
Stud alignment	Centric

Number of flanges, outer ring	2
Feature for tightening	Hexagonal recess
Cage	Without
Radial internal clearance	Between C2 and CN
Tolerance class	Other
Material, bearing	Bearing steel
Coating	Without
Sealing	Seal on both sides
Sealing type	Labyrinth
Lubricant	Grease
Relubrication feature	Centre of each stud end and radial hole in stud shank

Logistics	
Product net weight	0.197 kg
eClass code	23-05-09-03
UNSPSC code	31171512

SKF drawings