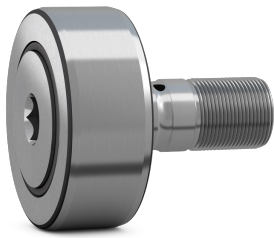


SKF NUKR 47 A



Cam follower (stud-type track roller) with integral sealing and relubrication feature

Cam followers (stud-type track rollers) are designed to run on all types of tracks and to be used in cam drives, conveyor systems, etc. They are based on a double row full complement cylindrical roller bearing with a threaded solid stud instead of an inner ring. They have a thick-walled outer ring with a crowned running surface and are supplied sealed and ready-to-mount. The bearings can be relubricated via the stud.

Technical specifications

Dimensions	
Outside diameter	47 mm
Attachment diameter	20 mm
Total length	66 mm
Width outer ring	24 mm
Length shank on stud	40.5 mm
Distance lubrication hole to flange ring	9 mm
Distance face outer ring to face side washer	0.8 mm
Outside diameter flange ring	27 mm
Thread stud	M 20x1.5
Length thread	21 mm
Seat diameter for lubrication accessories	6 mm
Diameter of lubrication hole (shank)	4 mm
Width across flats	10 mm
Chamfer dimension	1 mm
Functional outside diameter	47 mm
Stud diameter	20 mm
Length	66 mm
Width, outer ring	24 mm

Calculation data	
Basic dynamic load rating	28.6 kN
Basic static load rating	33.5 kN
Fatigue load limit	3.9 kN
Maximum dynamic radial loads	17.6 kN
Maximum static radial loads	25 kN
Limiting speed	3800 r/min

Mounting information	
Recommended tightening torque	120 N·m

Included products	
Grease fitting	NIP A2x7.5
Hexagonal nut	M 20x1.5

Associated products	
Lubrication adapter	AP 10

Performance	
Basic dynamic load rating	28.6 kN
Basic static load rating	33.5 kN
Limiting speed	3800 r/min

Properties	
Rolling elements	Cylindrical rollers
Number of rows	2
Outer ring profile	Crowned
Stud alignment	Centric

Number of flanges, outer ring	2
Feature for tightening	Hexagonal recess
Cage	Without
Radial internal clearance	Between C2 and CN
Tolerance class	Other
Material, bearing	Bearing steel
Coating	Without
Sealing	Seal on both sides
Sealing type	Labyrinth
Lubricant	Grease
Relubrication feature	Centre of each stud end and radial hole in stud shank

Logistics	
Product net weight	0.46 kg
eClass code	23-05-09-03
UNSPSC code	31171512

SKF drawings

