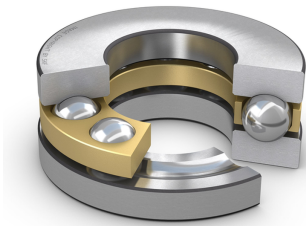


SKF 51132 M

Single direction thrust ball bearing

Single direction thrust ball bearings can accommodate axial loads in one direction. They must not be subjected to any radial load. Their separable components facilitate mounting/dismounting and maintenance inspections. Many of the components are interchangeable. The shaft washers have a ground bore that enables an interference fit.



Technical specifications

Dimensions	
Bore diameter	160 mm
Outside diameter	200 mm
Height	31 mm
Outside diameter shaft washer	198 mm
Inner diameter housing washer	162 mm
Chamfer dimension washer	1 mm

Abutment dimensions	
Abutment diameter shaft	184 mm
Abutment diameter housing	176 mm
Fillet radius	1 mm

Calculation data	
Basic dynamic load rating	112 kN
Basic static load rating	465 kN
Fatigue load limit	12.9 kN
Reference speed	1700 r/min
Limiting speed	2400 r/min
Minimum load factor	1.1

Performance	
Basic dynamic load rating	112 kN
Basic static load rating	465 kN
Reference speed	1700 r/min
Limiting speed	2400 r/min

Properties	
Axial load capability	Single-direction
Number of rows	1
Cage	Machined brass
Housing washer type	Flat
Tolerance class	Normal
Material, bearing	Bearing steel
Coating	Without
Indicative carbon footprint for new product	8.3 kg CO ₂

Logistics	
Product net weight	2.3 kg
eClass code	23-05-10-01
UNSPSC code	31171507

SKF drawings