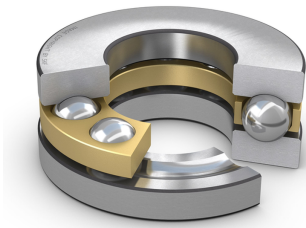


# SKF 51336 M

## Single direction thrust ball bearing

Single direction thrust ball bearings can accommodate axial loads in one direction. They must not be subjected to any radial load. Their separable components facilitate mounting/dismounting and maintenance inspections. Many of the components are interchangeable. The shaft washers have a ground bore that enables an interference fit.



### Technical specifications

Dimensions	
Bore diameter	180 mm
Outside diameter	300 mm
Height	95 mm
Outside diameter shaft washer	295 mm
Inner diameter housing washer	184 mm
Chamfer dimension washer	3 mm

Abutment dimensions	
Abutment diameter shaft	251 mm
Abutment diameter housing	229 mm
Fillet radius	2.5 mm

Calculation data	
Basic dynamic load rating	520 kN
Basic static load rating	2000 kN
Fatigue load limit	47.5 kN
Reference speed	750 r/min
Limiting speed	1100 r/min
Minimum load factor	21

Performance	
Basic dynamic load rating	520 kN
Basic static load rating	2000 kN
Reference speed	750 r/min
Limiting speed	1100 r/min

Properties	
Axial load capability	Single-direction
Number of rows	1
Cage	Machined brass
Housing washer type	Flat
Tolerance class	Normal
Material, bearing	Bearing steel
Coating	Without
Indicative carbon footprint for new product	103 kg CO <sub>2</sub>

Logistics	
Product net weight	28.7 kg
eClass code	23-05-10-01
UNSPSC code	31171507

**SKF drawings**

